

<http://www.pattonspoint.com>

CASTLE CREEK REALTY
PRESENTS:

406 STRIKE EAGLE DR.

LOT # 87

Pattons Point

\$166,400

- 1684 SQUARE FEET
- 3 BEDROOMS
- 2 BATHS
- FINISHED BONUS ROOM
- FAMILY ROOM W/ FIREPLACE
- KITCHEN WITH SMOOTH-TOP RANGE, MICROWAVE, BREAKFAST BAR, & PANTRY
- HARDWOODS IN KITCHEN & FOYER
- DOUBLE GARAGE
- MASTER SUITE WITH WALK-IN CLOSET, LUXURY BATH WITH GARDEN TUB/SHOWER, DOUBLE VANITY AND TILE FLOOR.
- COVERED BACK PORCH



Stone Creek Cottage II

Builder is offering up to \$3K in closing costs with use of preferred attorney!

The Stone Creek Cottage II is an adorably quaint home with a finished bonus room upstairs. This luxury home features a fireplace in the family room, hardwoods in the kitchen & foyer, and a covered back porch. Your main floor master suite is the perfect place to relax, with a walk-in closet, and luxury bath with garden tub/shower, and double vanity. The well appointed kitchen has a lot of counter space, a breakfast bar, and also features a smooth-top range, built-in microwave, and pantry closet. Come home to the lovely Stone Creek Cottage in Pattons Point!

**Actual Plan is reversed and rendering above is for reference only.



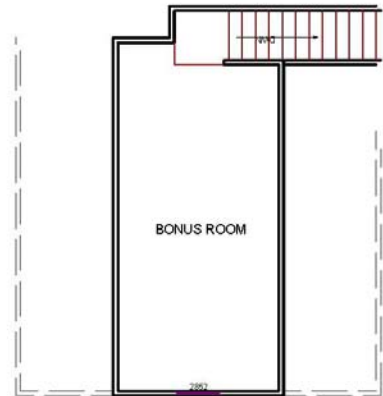
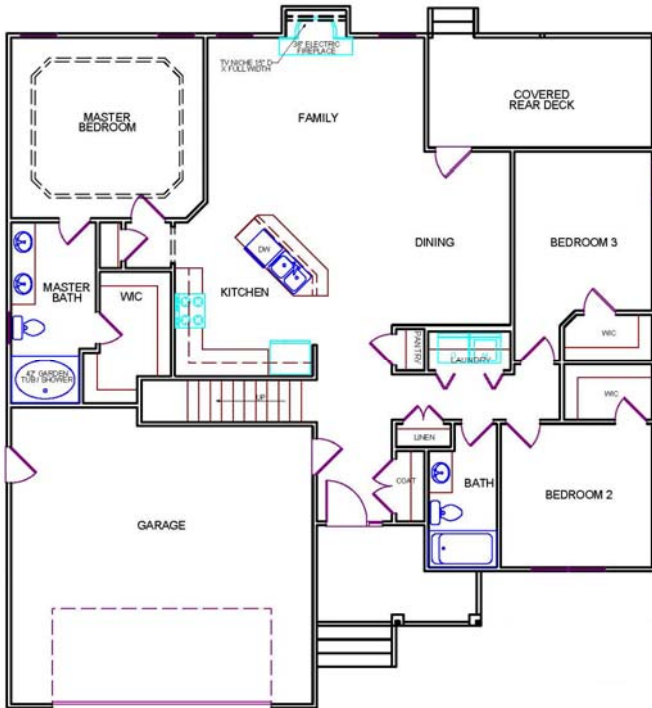
<http://www.pattonspoint.com>

CASTLE CREEK REALTY
PRESENTS:

406 STRIKE EAGLE DR.

LOT # 87

Pattons Point



Castle Creek
Realty

CastleCreekRealEstate.com

Call us at

910-242-9030

For more information

**Actual Plan is reversed and images above are for reference only. Call for details!